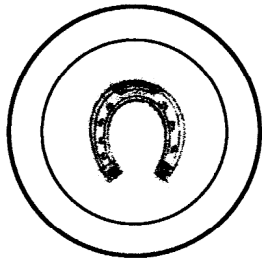


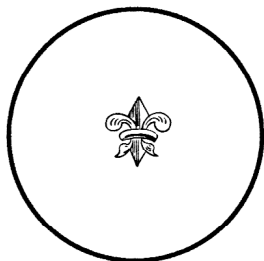
ANTIQUE COLLECTIBLES

by Dale Seymour and Ken Craig

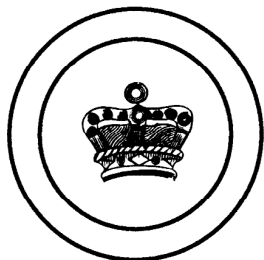
They just keep on coming! No, we are not talking about dissapointments from the stock market. We are talking about new finds of old poker chips. This article includes several new chip finds in both the ivory and clay categories. Some of the ivory finds below were submitted by Ernie Meador (IN), Ralph Strandwold (CA) and John Benedict (FL). We have assigned new codes as follows:



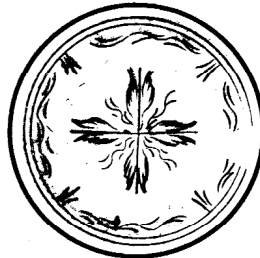
ID-GB
Horseshoe / v:k



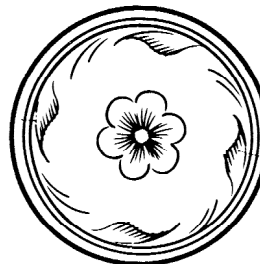
ID-JQ
Fleur-de-lis / v:k



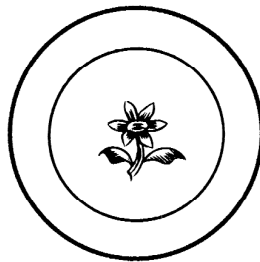
ID-RI
Crown / v:p



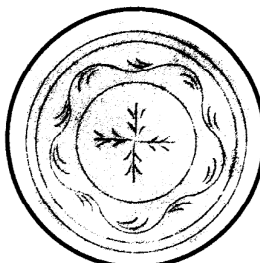
IE-EV
Mirror Leaves / v:l



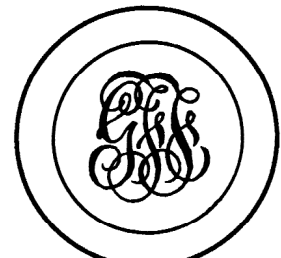
IE-OD
Blossom / v:k



IE-TAa
Flower / v:l



IE-YQ
Five Border / v:l



IM-EU
GJJ / v:p



IM-JC
TW / v:p



IN-WK
4/F/3/2 v:m



IN-WL
4/3/S/2 v:m



IN-XO
6/3/3/2 / v:l



IO-BF
3/3/S/2 / v:l



IO-BW
3/F/S/2 / v:l



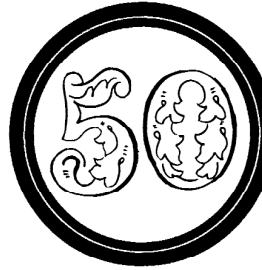
IO-CI
8/3/S/2 / v:l



IO-DU
v:n



IO-EM
v:m



IP-SL
v:p



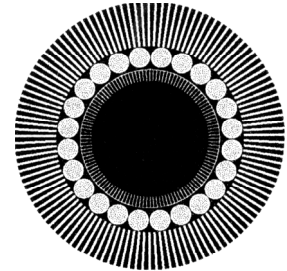
IR-CA
California / v:t



IR-CA
Reverse

Now for the antique clay chip finds. Ernie Meador found a new clay design chip which is interlocking with serrated edges, like a coin. We had great difficulty photocopying the chip because it had no contrasting color so we have recreated it with our Adobe Illustrator software so you can identify it. The 24 circles (ring of dots) are not actually in a different color, but it

helps you see them more easily. These chips were probably made in the late 1930's and into the 1940's as were most of the interlocking chips. These are not plastic, but a combination of clay and plastic. We don't code plastic chips.



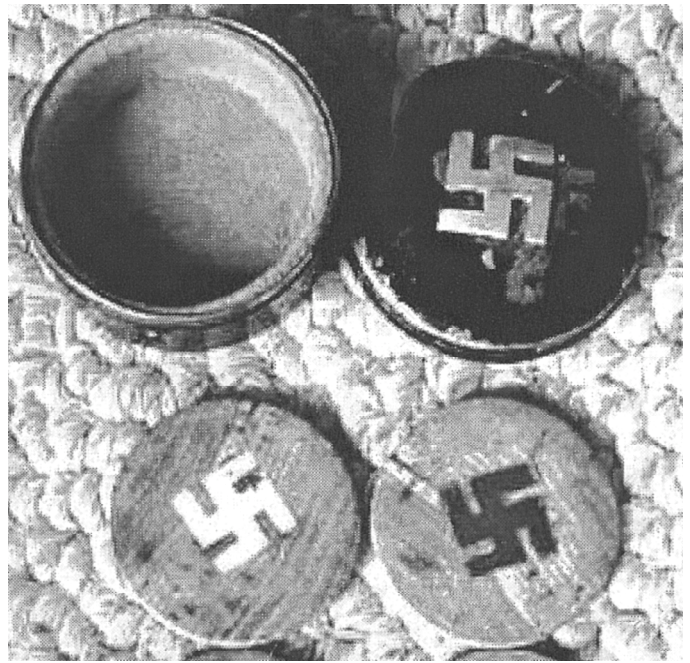
PD-RL Ring of Dots
Interlocking / v:d

Another of Ernie's finds was a paper horseshoe chip with the initials HJ or maybe JH. We have not coded non-ivory personalized chips so we won't start now — but nice find anyway, Ernie.

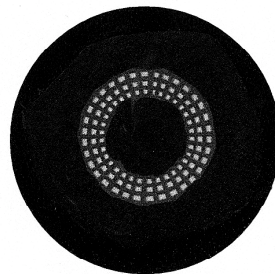


Paper horseshoe chip with initials

In the fall issue of this column, we mentioned a new Ralph Strandwold find of a series of small (24mm) advertising chips from Buss Fuses. The chips are made of a composition pressed paper material. Our previous attempts to photocopy or scan these chips resemble a full moon on a dark night — but, Ernie Meador, sent in some hand-drawn graphics which give us some idea how they appear. We assigned the entire set the same code, BY-BX.



David C. Smith (NH) found a new clay tiger chip at Brimfield. There may be some question as to whether the artist who drew this rendering meant it to be a dragon or a tiger. David, the finder, called it a tiger head and so we confirmed that with a coin toss.



**PA-AL 3 Dot-Circles
engraved / v:f**

Don Lueders (OR) sent us a picture of some wooden swastika chips and a wooden box (shown above) that held the chips. As you know, clay swastika chips were made as early as 1913 by the United States Playing Card Co. and were symbols of good luck, not Nazism. This set appears to be hand-made. We have seen different hand-made swastika chips before. No code will be given to the chips.



**PA-TO Tiger Head
Engraved / v:g**

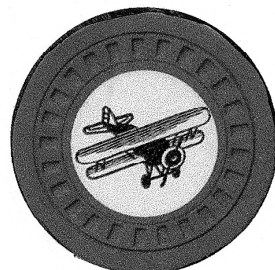
Michael Par (AZ) found a new clay design chip. The chip contains three concentric rings of white dots near the center of the chip. Red and blue chips with white dots are known. Do you suppose the white chip contained blue dots? Let us know.

Don also found these Sylvania clay advertising chips and we would have assigned them a code if they hadn't displayed the "space 1149". These were most likely single event chips used at a trade show in the 40's to 60's.



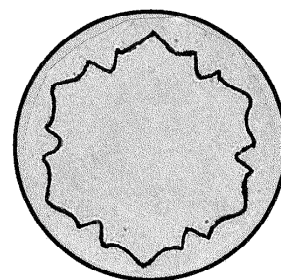
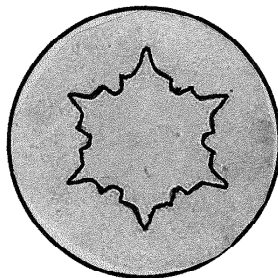
**Wood chips
Single occasion
Sylvania advertising chips**

Ralph Strandwold found a new Maple Leaf chip and a hub mold inlaid litho of a biplane.



PL-MB Maple Leaf
PT-BR Biplane
Inlaid litho / f:g

Finally, we show two more clay chips to add to a series of chips with somewhat crude geometric graphics.



PD-CZ Snowflake
engraved / v:f
PD-DH Geometric
Engraved / v:f

Please send us your finds which might suspect are new finds. Your fellow collectors will appreciate your efforts.

See you at the BIG SHOW!!!!

Chip Collector TERMINOLOGY Round Robin

by **Robert Pardue**

“Round Robin” trading by mail has really become popular in the last few years. A “round robin” can be started by any chipper, usually by posting a notice on a chipper electronic bulletin board like thechipboard.com. The initiator specifies the type of chips or other collectible, such as \$1 Nevada chips; roulette chips; slot cards, etc. and invites 10+ collectors to join in. The initiator starts the round robin with a supply of the designated item — say 30 or 40 \$1 Nevada chips — and sends it to the first person on the list. They take out chips they want and add a like number in return. The round robin is forwarded by mail to each person on the list, with 1-for-1 trading of chips occurring at each stop. When the round robin returns to the initiator, he has a new variety of chips for his collection or to start another round robin.

The cost to each participant is only the cost of mailing it to the next person. It’s a good way to trade some chips or other collectibles! Etiquette requires that chips exchanged are of a like quality and type; that the round robin be forwarded promptly; and that the specific rules of the initiator be followed.

If you’re interested in participating in a round robin, watch for announcement on thechipboard.com or other BB’s. Not online? Perhaps a chipping friend who is can add you to a round robin, as long as you can comply with the progress tracking of the round robin through your friend.