

**"Clay" / Composition Gaming Checks
Gaming Check Distributors**

by Howard W. Herz - Ch-85-3



San Francisco has had a number of businesses that supplied the club rooms of the city and the surrounding area. In 1966 A. L. Warner opened a club room supply business under the name *Pioneer Club Supply*. Located at 1063 Howard Street in the Mission district, the company offered a wide range of gaming supplies. The gaming checks offered were made on the generic "diamond-square" mold of the Burt Company of Portland Maine.

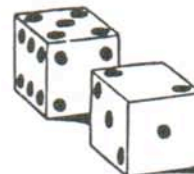
A number of checks were produced by Pioneer for Nevada casinos, but most of the company's business was in the San Francisco Bay area and Northern California. Upon the death of Mr. Warner the company was purchased by the an employee who is the present owner. The company was moved to its present address at 5252 Mission Street.



PIONEER CLUB SUPPLY

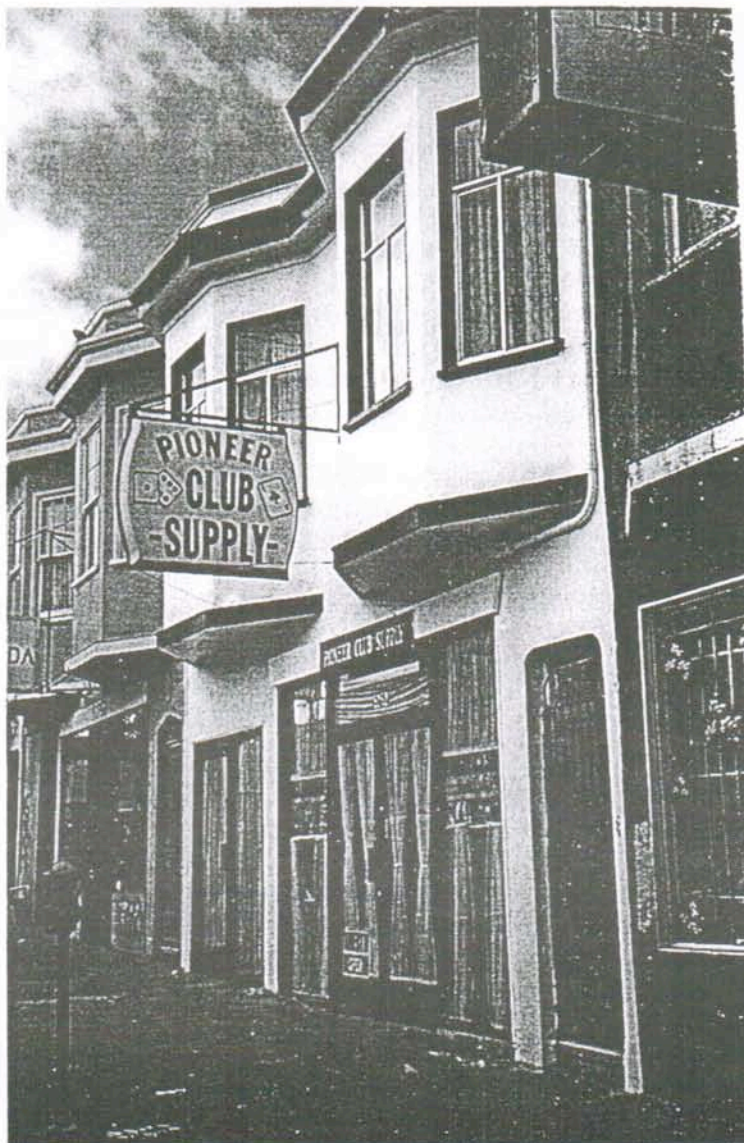
5252 Mission Street • San Francisco, Calif. 94112 • (415) 469-5444

CARDS — DICE — POKER CHIPS — DICE CUPS
CLUB ROOM SUPPLIES



Pioneer Club Supply

5252 Mission Street
San Francisco, California
1966 - to date



"Clay" / Composition Gaming Checks
Gaming Check Distributors
by Howard W. Herz - Ch-85-3



T. R. King & Co.
400 W. Pico Blvd.
Los Angeles, California
various location 1926 to date

The first listing for T.R. King that we have found appears in the 1924 Kansas City, Missouri telephone book where the company has a line listing and an advertisement in the business section under "playing cards". The address is listed as 616 Main Street with phone number DELaware 0628.

The 1925 KC City directory lists the company at a new address of 206 Admiral Blvd. and a phone number of VICTor 4299. Their business is listed as "novelties". This directory also has an individual listing for T.R. King as a person living at 2516 Montgall Ave, and associates this person with the company of the same name.

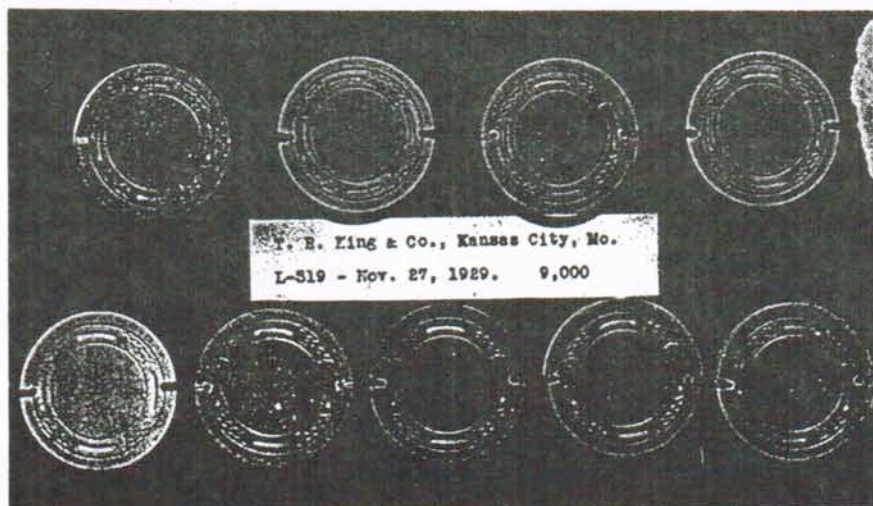
The 1926 phone book again lists a T.R. King at the Admiral Blvd. address and also has a business advertisement under playing cards. the 1926 city directory list T.R. King & Co., but now shows M.C. Anderson as the owner.

The 1927 phone books and directory listing are the same and the 1926.

The 1928 city directory lists a new address of 617 Grand Ave. and further lists the principal as (Milton C Anderson). The nature of their business is listed as "novelty mfg."

The 1929 and 1930 phone books continue to list T.R. King & Co. at Grand Ave. and the telephone number remains as VICTor 4299. No listing for T.R. King are found in Kansas City after the 1930 phone book.

In 1929 the United States Playing Card Co. archives record an order for 9,000 chips in 9 colors ordered for T.R. King & Co. Kansas City Mo. - ordered November 27, 1929. this is the first appearance of the large crown mold the T.R. King and we believe the earliest that the company offered custom chips on the large crown mold.



The 1931 Los Angeles city directory lists a

KING T R & CO. M C Anderson Mgr. manufacturers of King Brand Trued-Up Dice, Calluloid Novelties, Club Room Supplies, 218 S Bway, Tel Mutual 8665

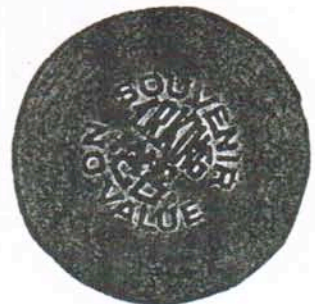
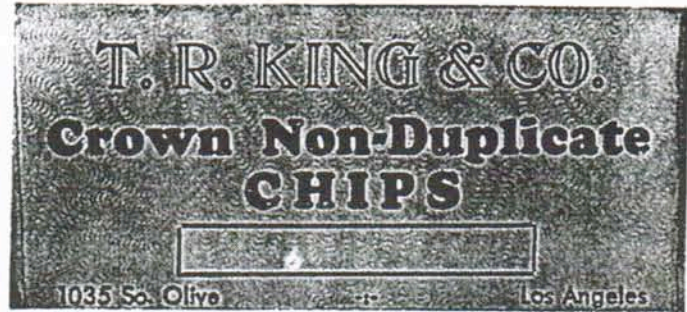
with an additional listing for

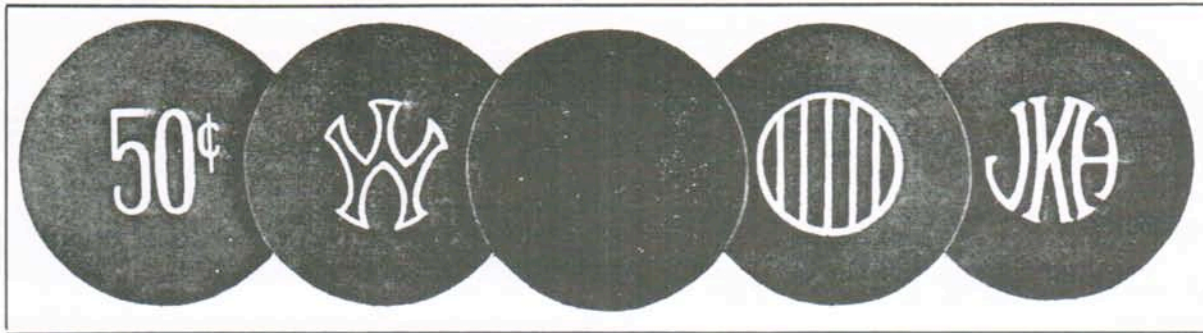
ANDERSON Milton C (Adeline F) mgr T R King Co h8783 Dalton av

Subsequent listing for the company continue at several addresses in the Los Angeles area to date.

The small crown mold appears to have been developed in the late 1940's as a substitute for the worn out large crown mold. Checks from various casinos indicate that both molds were used simultaneously for a period of time until the large crown became too worn.

For brief period of time the company maintained a Las Vegas office.





PLAIN or MONOGRAM ACME CHIPS

Thick Square Edge

This fine chip is a wonderful value and was developed to our specification and judgment. We offer this chip as an inexpensive utility chip, suitable for any game you put them on. They are made in the thick square edge and this is the first time in history a chip of this design was ever offered at this low price. They may be monogrammed with any combination of initials or price. We also supply them plain, without monogram. They are of good quality, uniform thickness and color, stack perfectly and have a dull sand blast finish.

Can be supplied immediately from stock in any amounts of the following ten colors: White, Crimson, Blue, Yellow, Pink, Chocolate, Lavender, Light Blue, Light Green and Black. Colors may be assorted in any amounts as desired. These chips are full 1 1/2 in. diameter.

No. 604—Acme Chips, without Monogram, per 100 \$3.00 Per 1000 \$27.50
No. 604—Acme Chips, with Monogram of your selection per 100 . . \$4.25 Per 1000 \$40.00

KING'S MINIATURE CHIPS

King's Miniature Chips find many uses such as markers and counters in both American and Oriental Games. This chip is 7/8 in. diameter and has a sand finish. They are not slick and handle easily. Supplied in four colors, White, Red, Blue and Yellow.

No. 611—King's Miniature Chips, per 100 \$.75 Per 1000 \$ 5.00

T. R. KING & CO.

11

123 EAST SIXTH STREET



KING'S REGISTERED CROWN CHIPS

Standard Weight

King's Registered Crown Chips offer absolute protection against ringers. Our Patented Crown Design and Registration of all Monograms is your guarantee. The material used in this chip is genuine Paranoid which is a fibrous composition that will not chip or crack and will outwear any other chip material on the market. This chip requires no breaking in period, they have a dull etched finish, concaved center and are made in a thick square edge. They will cut and stack perfectly and will not warp.

King's Registered Crown Chips are available in the following ten colors. White, Red, Blue, Orange, Chocolate, Light Green, Lavender, Light Blue, Pink and Black. Colors may be assorted in any amounts. Special colors furnished if desired. With King's Crown Registered Crown Chips, colors are ALWAYS uniform.

Initial Monograms, Name or Special Designs are yours exclusively as no two racks are ever made alike or even similar. You can have a price on one side and your monogram or design on the reverse side. Immediate delivery on all colors.

This chip is suitable for all games and is particularly adapted to Faro, Poker, Pan, makes a wonderful Wheel Chip and also fine for Craps and Twenty-One.

No. 600—King's Registered Crown Chips, Monogrammed both sides, per 100 \$7.00; per 1000 . . . \$65.00



KING'S MERCURY SPEED CHIPS

50% MORE WEIGHT ADDED

This new HEAVY SPEED chip was developed especially for crap play where the action is fast. This extra weight and new etched finish holds a stack firmly when shoved or when being cut to.

We are using our registered Crown Design and guarantee this chip to be non-duplicate. There are never two racks made alike or even similar. You have complete protection with this chip.

New Colors: We are making five colors in this new Heavy Chip which are NEW and DIFFERENT from any color made before. For description we call them Grey, Orange, Green, Crimson and Blue. We suggest the Grey for dollar value, the Orange for five dollar value, the Green for twenty-five dollar value, the Crimson for values over twenty-five dollars and the Blue for values under a dollar.

By suggesting the use of colors for values shown above and reserving this New Mercury Speed Chip for Chartered Clubs, Legal Casinos and permanent organizations, we eliminate the hazard of your club using one color for a twenty-five dollar value and another club using the same color for a dollar value. We expect cooperation in the use of colors.

THICK SQUARE EDGE — 50% ADDED WEIGHT — REGISTERED — NEW COLORS — NON-DUPLICATE — SPEED

Monogram, name or special designs are yours exclusively. Price includes monogramming on both sides of chip using our regular monogram designs or include monogram one side and price on reverse side. There is a die charge of five dollars on special designs such as "S. S. Rex" and "Hanks" as shown above.

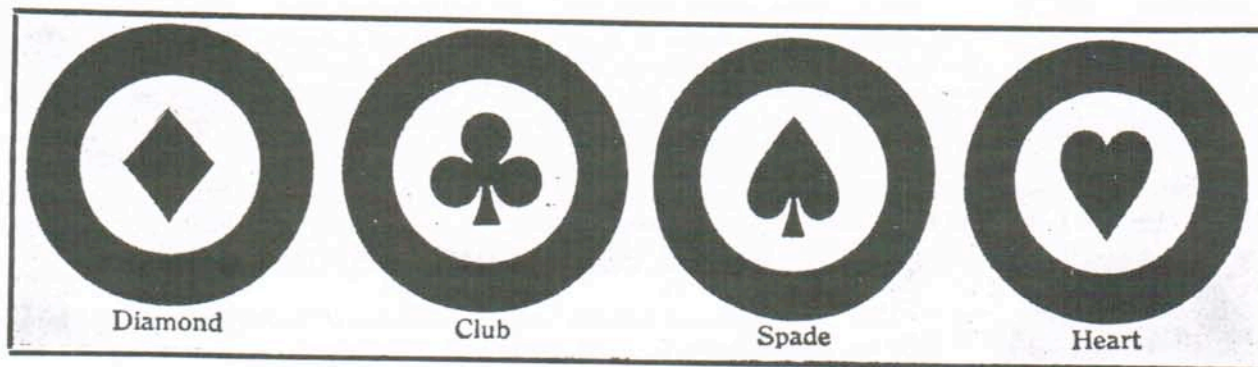
No 607 King's Mercury Speed Chip, monogrammed both sides, per 100 \$8.00, per 1000 \$75.00

Mercury Speed Chips sold only by T. R. King & Co. and is the heaviest and fastest dealing chip made.

T. R. KING & CO.

13

123 EAST SIXTH STREET

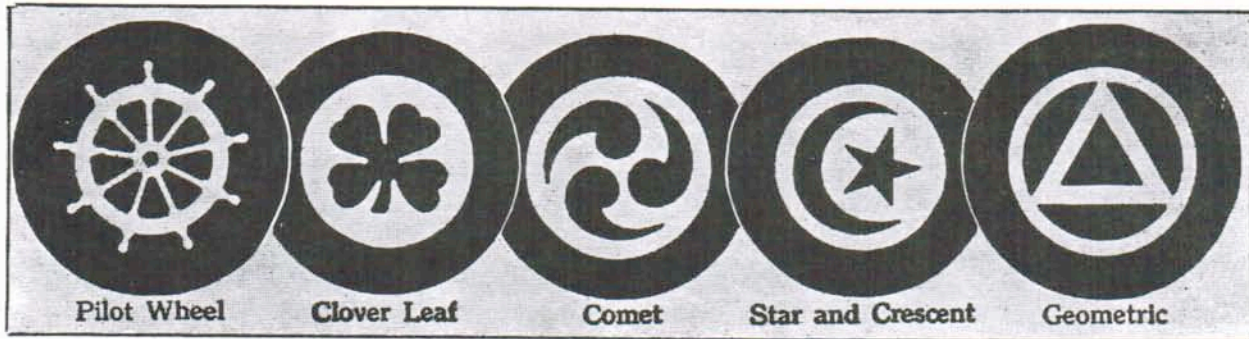


KING'S STANDARD WHEEL CHIPS

The four designs shown above are very popular with clubs that have up to four wheel outfits in operation. The designs are well known by name and are easily distinguished from one another. They are made of genuine Paranoid, a tough fibrous material that stands up under the hardest use.

All of King's Standard Wheel Chips are made in the thick square edge and with a dull sand blast finish. They require no breaking in period. Made with a slight concave that prevents the chips sticking together and they always stack and cut perfectly. Following is the color assortment we carry in racks of 1800. 300 White, 300 Crimson, 300 Blue, 300 Yellow, 200 Light Green, 200 Lavender, 200 Chocolate. Additional chips and colors are available. State choice of design.

No. 601—King's Standard Wheel Chips, per 100 . . \$7.00 Per 1000 . . \$65.00 Rack of 1800 . . \$117.00



KING'S STANDARD WHEEL CHIPS

The above five designs are our Standard Inlaid Thick Square Edge Wheel Chips. They are made of genuine Paranoid, a fibrous composition that is tough and durable and accepted as the finest material for Roulette Chips you can buy.

The chip is designed with a slight concave that prevents sticking and they are made in a dull sand finish that makes them hold a stack perfectly. They require no breaking in period. Colors are permanent and chosen for contrast. We carry in stock complete racks in the following amount and colors. 300 White, 300 Crimson, 300 Blue, 300 Yellow, 200 Light Green, 200 Pink and 200 Chocolate. Additional chips or colors are available. State design desired.

No. 601—King's Standard Wheel Chips, per 100 . . . \$7.00 Per 1000 . . . \$65.00 Rack of 1800 . . . \$117.00

USED WHEEL AND POKER CHIPS

From time to time we get a great number of Used Chips taken in trade for new ones. We may have just what you need, let us know your requirements of colors and amounts. We will write you by return mail just what we have.

T. R. KING & CO.

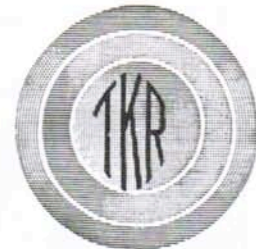
15

123 EAST SIXTH STREET

KING'S NOISELESS PAPER CHIPS



This is a good quality Paper Chip with well finished edges and are made exclusively for us in six colors. They are suitable for monogramming and make up into a nice looking chip. You can have monogram on one side and price on the reverse side. The chip is also sold plain, without monogram. Colors as follows, White, Red, Blue, Yellow, Green and Chocolate.



No. 605—King's Noiseless Paper Chip, plain, per 100 . . . \$.75 Per 1000 . . . \$ 6.00
No. 605A—King's Noiseless Paper Chip, with monogram, per 100 . . . \$1.50 Per 1000 . . . \$10.00

KING'S PLAIN COMPOSITION CHIPS

ROUND EDGE

This is an inexpensive Composition Chip of Superior Quality and not easily broken. They are quite suitable for most games and will stand up under ordinary use. They stack perfectly and handle easily as they have good weight. Packed 100 to a box and colors may be assorted as desired in any quantity. We do not monogram this chip, it is sold plain only. They are full 1 1/2" diameter and regular round edge. Six colors: White, Red, Blue, Yellow, Green and Black.

No. 609—King's Plain Composition Chip, per 100 . . . \$1.75 Per 1000 . . . \$15.00

KING'S SMALL SIZE COMPOSITION CHIPS

We carry this smaller chip in six colors and they find many uses both in the Casino and the home. They are 1 1/4 in. diameter or the size of a half dollar. Superior quality composition and colors are White, Red, Blue, Yellow, Green and Black. We do not monogram this chip.

No. 608—King's Small Sized Chip, 1 1/4 in. Per 100 . . . \$1.75 Per 1000 . . . \$15.00